



Our Beauty Academy offers professional quality services in smart modern salons and treatment rooms. Services are carried out by student beauty therapists under the supervision of fully qualified staff. Our prices reflect the educational level and experience of our team.

For opening times please check our website www.windsor-forest.ac.uk/salon

To book an appointment, please call 01753 793246.

Please be aware that not all services are available at all times, check availability when booking. Unfortunately, we are unable to treat those under the age of 16 as they are not permitted in the salons.

The Salon - Hair & Beauty Graduate Academy
Langley College, Station Road, Langley, Berkshire SL3 8BY

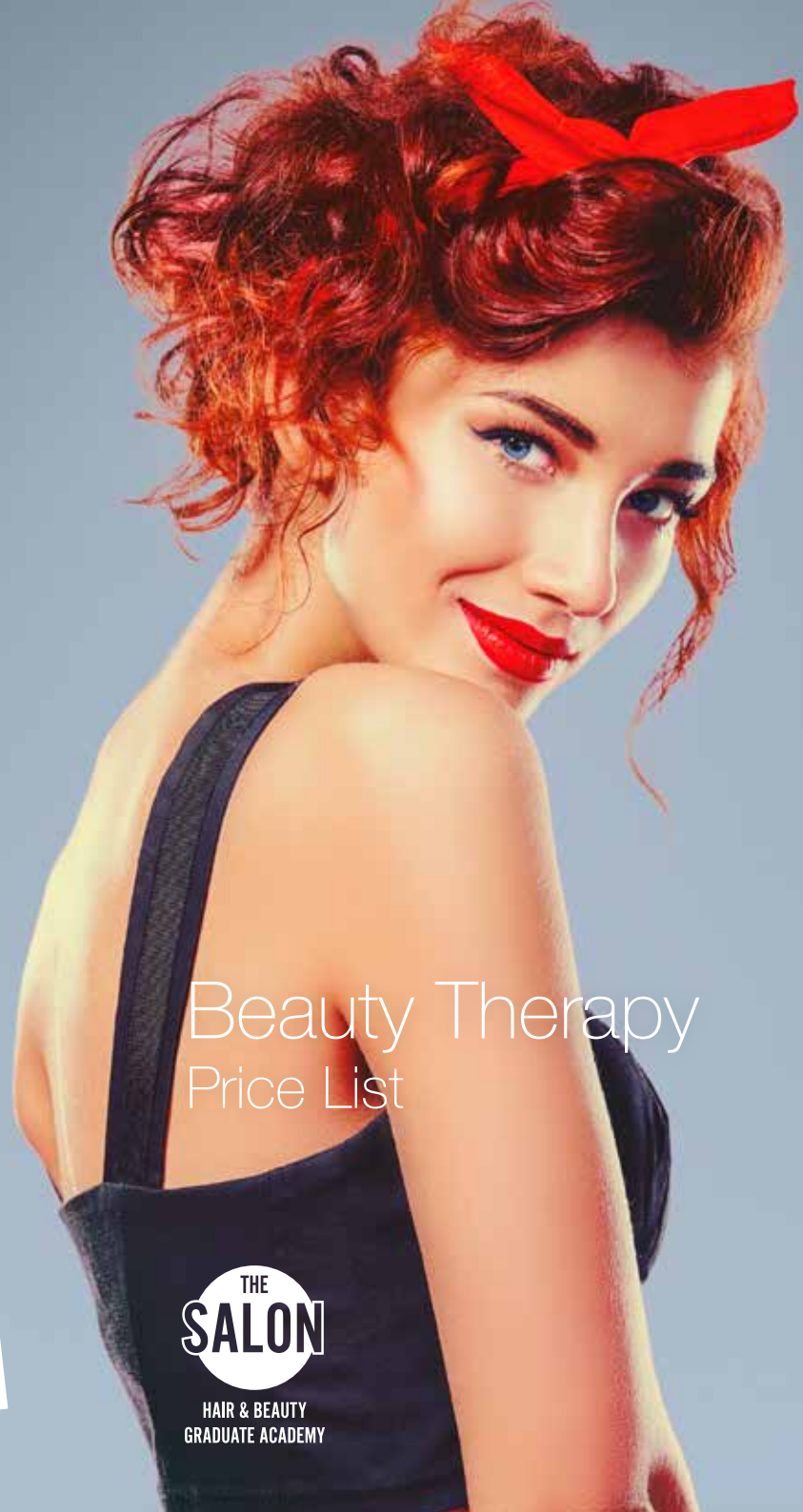

KAESOCOLLECTION
THE INNOCENCE OF BEAUTY

O·P·I

Eve Taylor
LONDON



REF:21679_HL_11-16



Beauty Therapy Price List

THE
SALON
HAIR & BEAUTY
GRADUATE ACADEMY

Beauty Therapy Price List

Facials

| | Time | Level 1 | Level 2 | Level 3 | Qualified Beauty Therapist |
|---|----------------|---------|---------|---------|----------------------------|
| Kaeso Facial A tailor-made facial to suit your skin | 45min | £8 | - | - | - |
| Eve Taylor Essential A tailor-made facial to suit your skin. Includes scalp massage | 1hour 15min | - | £15 | - | £24 |
| Eve Taylor Intensive Facial # A tailor-made facial to suit your skin | 1hour 15min | - | - | - | £31 |
| Galvanic Face # A deep cleansing facial penetrating products deeper into the skin | 1hour 15min | - | - | £19 | £28 |
| Micro-current Face # A facial treatment which tightens, lifts and improves muscle tone | 1hour 15min | - | - | £19 | £28 |
| Micro-Dermabrasion Face # Skin resurfacing treatment which provides immediate visible results for skin ageing, lines & wrinkles, pigmentation, blemished scars, acne scars and stretch marks Using Crystal Clear machines from and products. | from 45min | - | - | £21 | £30 |
| Prescriptive Luxury Facial # Incorporating one of the following to suit your skin type - faradic, high frequency or lymph drainage | varies | - | - | £21 | £28 |

Manicure/Pedicure

| | Time | Level 1 | Level 2 |
|---------------------------------------|-------|---------|---------|
| Basic Manicure | 45min | £5 | - |
| Deluxe Manicure | 1hour | - | £15 |
| Basic Pedicure | 45min | £5 | - |
| Deluxe Pedicure | 1hour | - | £17 |
| Deluxe Manicure & Pedicure | 1hour | - | £28 |

Body Treatments

| | Time | Level 1 | Level 2 | Level 3 | Qualified Beauty Therapist |
|---|----------------|---------|---------|---------|----------------------------|
| Indian Head Massage # A therapeutic massage of the back, shoulders, neck, scalp and face, helping to relieve tension, stress and muscular pain | 30min | - | - | £11 | £15 |
| Full Body Massage # Relax, relieve tension and de-stress | from 1hour | - | - | £16 | £30 |
| Hot Stone Massage # A massage using heated stones to energise and rebalance the body | 1hour 15min | - | - | £21 | £34 |
| Prescriptive Luxury Body # Incorporating one of the following to suit your skin type - faradic, high frequency, lymph drainage, galvanic or micro-current | varies | - | - | £19 | - |
| Back Massage A relaxing treatment perfect for those who are time poor | 30 min | - | - | £8 | - |

Waxing

| | Time | Level 1 | Level 2 | Qualified Beauty Therapist |
|-----------------------|-------|---------|---------|----------------------------|
| Eyebrow Waxing | 5min | - | £4 | £6 |
| Lip Waxing | 10min | - | £3 | £6 |
| Chin Waxing | 10min | - | £2.50 | £3.50 |
| Full Leg Wax | 45min | - | £12 | £15 |
| Half Leg Wax | 30min | - | £9 | £12 |
| Underarm Wax | 15min | - | £5 | £7 |
| Bikini Wax | 15min | - | £6.50 | £8 |

Eye Treatments

| | Time | Level 1 | Level 2 | Qualified Beauty Therapist |
|--|-------|---------|---------|----------------------------|
| Eyebrow Shaping/Threading To maintain existing eyebrow shape | 15min | - | £3.50 | £5 |
| Eyeshadow Tint*** To darken the lashes | 20min | - | £5.50 | £5 |
| Eyebrow Tint*** To darken the eyebrows | 10min | - | £3.50 | £3.50 |
| Lash lift/perm *** # Lifts lashes from the root helping to enhance and emphasise the eyes, creating the illusion of length and volume. | 1hour | - | £15 | £24 |

Gelcolour

| | Time | Level 1 | Level 2 | Qualified Beauty Therapist |
|-------------------------|----------------|---------|---------|----------------------------|
| Hands | 45min | - | - | £15 |
| Feet | 45min | - | - | £15 |
| Hands & Feet | 1hour 15min | - | - | £28 |
| Soak-off | 15min | - | - | £5 |

Tanning

| | Time | Level 1 | Level 2 | Qualified Beauty Therapist |
|---------------------------|--------|---------|---------|----------------------------|
| Fakebake Spray Tan | varies | - | - | £15 |

* Only available at specific times

** At the discretion of students and staff

*** Patch test required at least 24 hours prior to the treatment

Discounts do not apply.